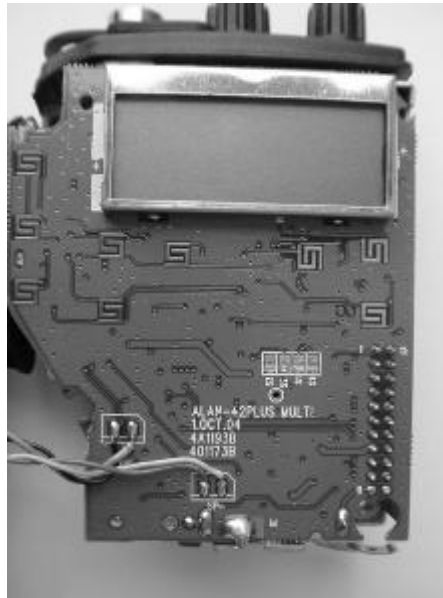
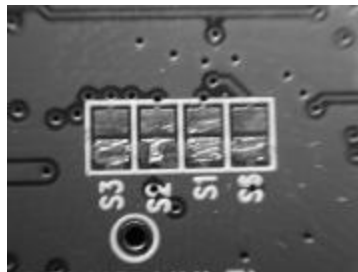


## ALAN 42 MULTI:

- Open the radio and locate the 4 jumpers in the centre of the PC board under the display:



- Work on the jumpers to get the required band:



- The bands : I, I2, d, d2, EU, EC, E, F, UK, are always active by Default, and in addition by acting on the jumpers: S1, S2, S3, S6, it is possible to activate and isolate the bands: PL, PX, RU, SW, according o to the following table:

Item	Input Pin Select				Result
	S6	S1	S2	S3	
0	0	0	0	0	All Band Active
1	0	0	0	1	Band PL Active
2	0	0	1	1	Band RU Active
3	0	1	0	0	Delete Band SW
4	0	1	0	1	Band PX Active
5	0	1	1	1	Band SW Active
6	1	0	0	0	Band PL, PX, RU, SW Disable

“1” = is Open circuit

“0” = is Short circuit