



PHOTOFACT®

TRADE NAME: Pearce-Simpson Model Companion

SUPPLIER: Pearce-Simpson, Inc., Sales & Service Div.
1385 N.W. 27th Ave., Miami 35, Florida

TYPE SET: T Tube, 3 Transistor Transceiver

POWER SUPPLY: 110-120 Volts AC, 60 Cycles (or)
12 Volt Storage Battery

RATING: 65 Watts, .60 Amp. @ 117VAC (Transmit)
55 Watts, .52 Amp. @ 117VAC (Receive)
4.7 Amp. @ 12.6VDC (Transmit)
3.6 Amp. @ 12.6VDC (Receive)

TUNING RANGE: Any 5 CB Channels 1 thru 22
Receiver may be continuously tuned.



ALIGNMENT INSTRUCTIONS

ALIGNMENT INSTRUCTIONS—READ CAREFULLY BEFORE ATTEMPTING ALIGNMENT

Suggested Alignment Tools:

A1 thru A6, A8 thru A12, A14, thru A18..... GENERAL CEMENT #5087, 8727 WALSCO #2515
A7..... GENERAL CEMENT #8272, 8276, 8298... WALSCO #2515, 2516, 2518, 2519, 2525, 2541
A13..... GENERAL CEMENT #8282, 8806, 8295, . WALSCO #2526, 2543, 2544, 2545

RECEIVER ALIGNMENT

Connect DC probe of VTVM to point Ⓐ, common to ground.

SIGNAL GENERATOR	CHANNEL	ADJUST	REMARKS
High side thru .05mfd to pin 2 of V2, common to ground. (455KC Unmod.)		A1, A2, A3, A4, A5, A6	Adjust for maximum deflection.
High side to antenna terminal common to ground. Tune to channel frequency.	1 (26.965MC)	A7	Rotate channel selector switch to the "External" position. Adjust for maximum deflection.
"	12 (27.105MC)	A8, A9, A10, A11	Adjust for maximum deflection.
"	20 (27.205MC)	A12	"

TRANSMITTER ALIGNMENT

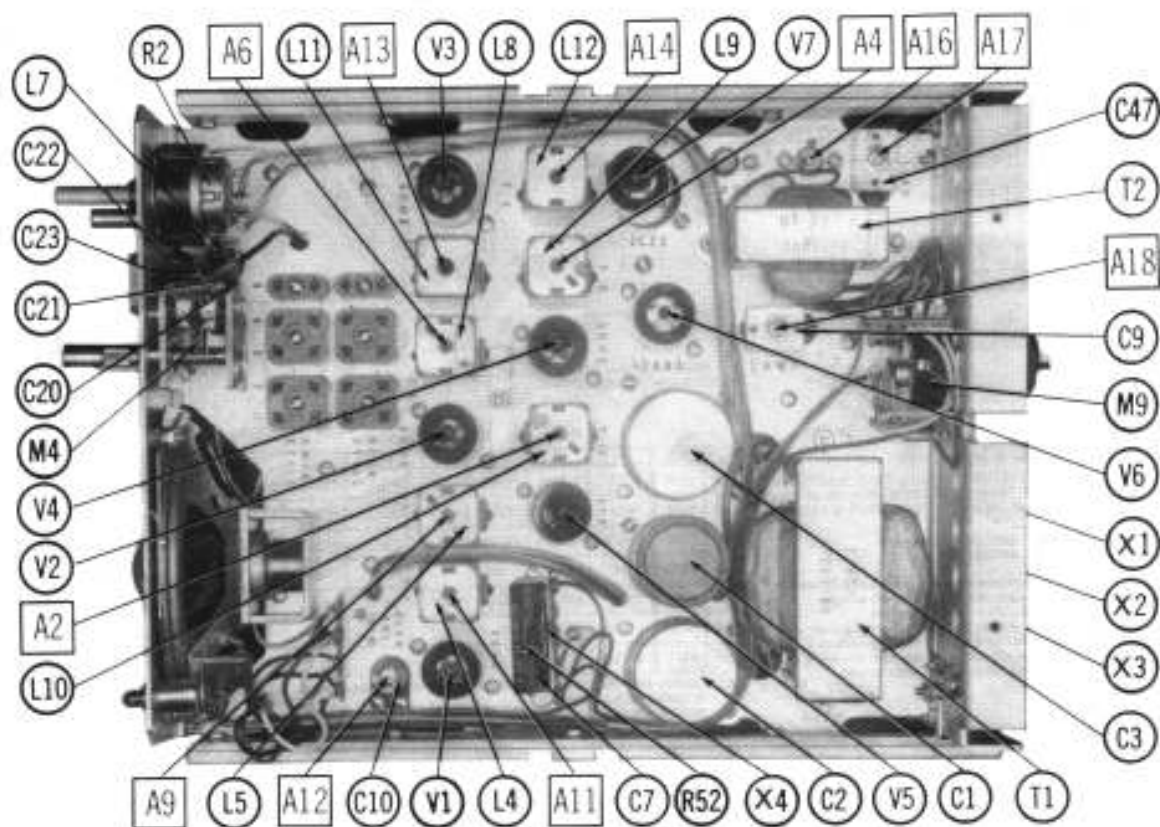
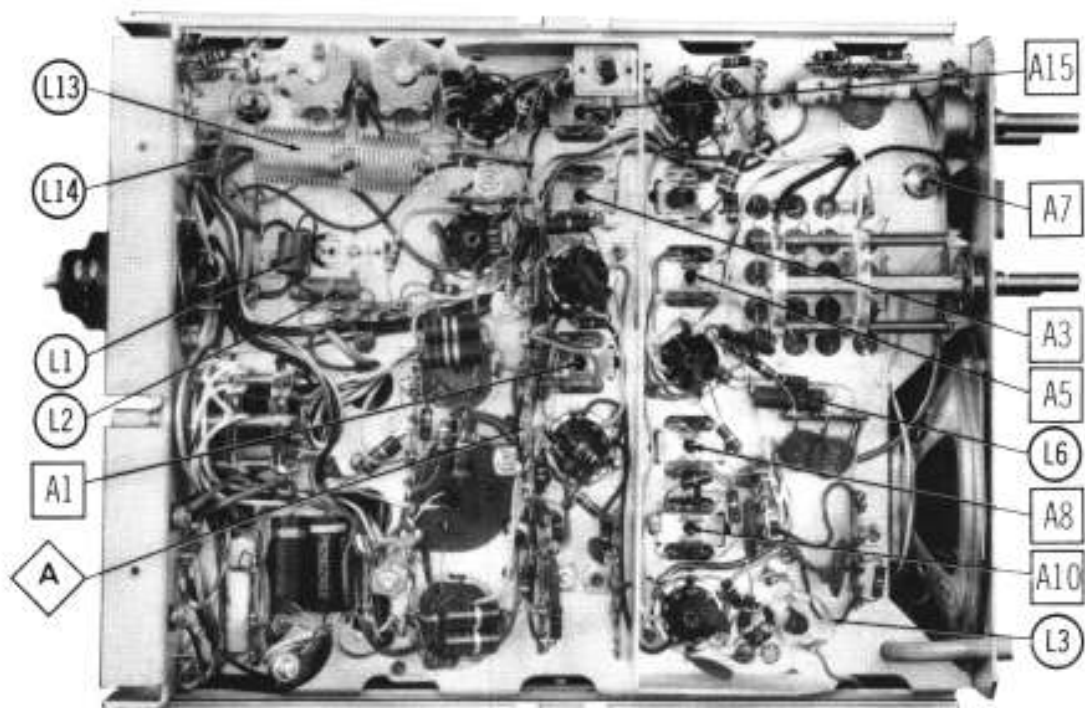
ONLY THOSE PERSONS PROPERLY LICENSED ARE PERMITTED TO MAKE REPAIRS OR ADJUSTMENTS WHICH MAY RESULT IN ILLEGAL OPERATION. (REFER TO FCC RULES & REGULATIONS PART 19, SUBPART D, SECTION 19.71)

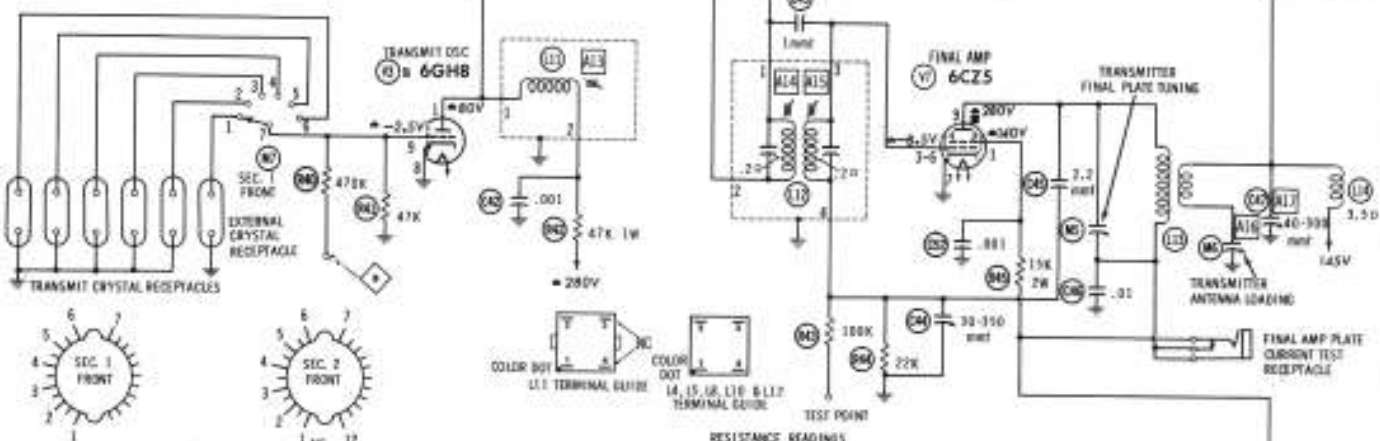
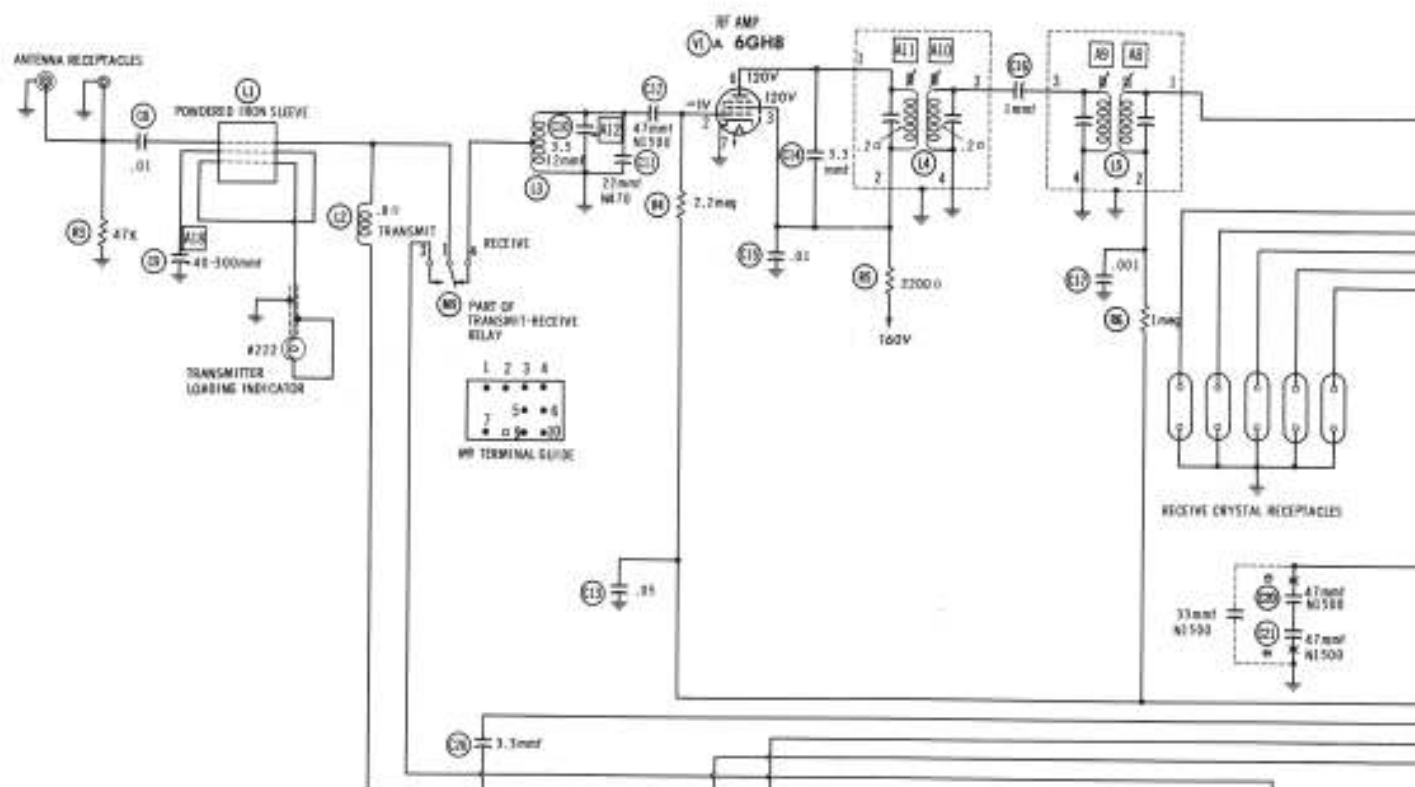
SPECIAL INSTRUCTIONS	INDICATOR	ADJUST	REMARKS
Place channel selector switch on or near the centermost channel as covered by the unit.	Connect dummy load and RF watt-meter to antenna terminal. Common to ground.	A13	Connect DC probe of VTVM to point Ⓑ, common to ground. Key transmitter. Adjust A13 for maximum VTVM indication. Rock A13 to each side of peak, noting rate of dropoff. Set A13 just below peak on side of gradual dropoff.
"	"	A14, A15, A16	Adjust for maximum output.
"	Indicator lamp on front panel.	A17	Connect antenna. Adjust for maximum lamp brilliance. Slight readjustment of A16 may be necessary.
"	"	A18	Adjust for desired lamp brilliance.

HOWARD W. SAMS & CO., INC. Indianapolis 6, Indiana

© 1963 Howard W. Sams & Co., Inc. Printed in U. S. of America LY814

PEARCE-SIMPSON MODEL COMPANION





MT TERMINAL NUMBERING GUIDE

NUMBERS ASSIGNED TO COILS, SWITCHES, PLUGS, SOCKETS, AND TRANSFORMERS ARE TO FACILITATE CIRCUIT TRACING ON COMPONENT REPLACEMENT AND MAY NOT NECESSARILY BE FOUND ON THE UNIT.

SEE PARTS LIST FOR ALTERNATE VALUE OR APPLICATION

1. DC voltage measurements taken with vacuum tube voltmeter.
2. AC voltages measured with 300 ohm per volt voltmeter.
3. Socket connections are shown as bottom views.
4. Measured values are from socket pin to common ground.
5. Line voltage maintained at 117 volts for voltage readings.
6. Nominal tolerance of component values makes possible a variation of $\pm 15\%$ voltage and resistance readings.

A PHOTOFACT STANDARD NOTATION SCHEMATIC
©Howard W. Sams & Co., Inc. 1963

RESISTANCE READINGS

ITEM	TUBE	Pin 1	Pin 2	Pin 3	Pin 4	Pin 5	Pin 6	Pin 7	Pin 8	Pin 9
V1	6GH8	170K	5.2meg	13000Ω	FIL	FIL	13000Ω	0.0	1000Ω	250K
V2	6GH8	122K	2meg	13000Ω	FIL	FIL	13000Ω	0.0	0.0	100K
V3	6GH8	147K	1meg	13200Ω	FIL	FIL	13200Ω	0.0	0.0	47K
V4	6GH8	140K	0.0	13000Ω	FIL	FIL	13000Ω	47Ω	9000Ω	2meg
V5	6GH8	150K	47K	1.8meg	FIL	FIL	0.0	0.0	1.7meg	1meg
V6	12A6	11000Ω	NC	47K	FIL	FIL	47K	850Ω	13000Ω	1110Ω
V7	6CZ5	115K	NC	22K	FIL	FIL	22K	0.0	NC	140Ω

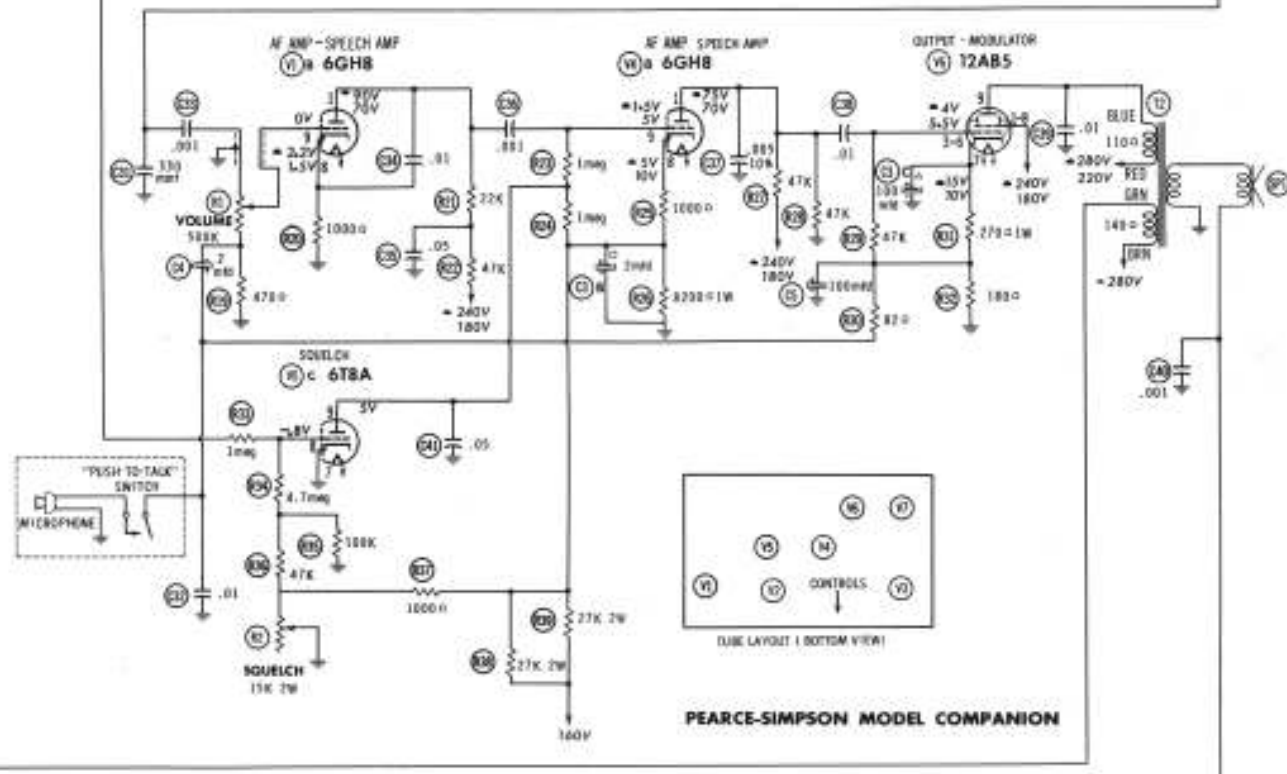
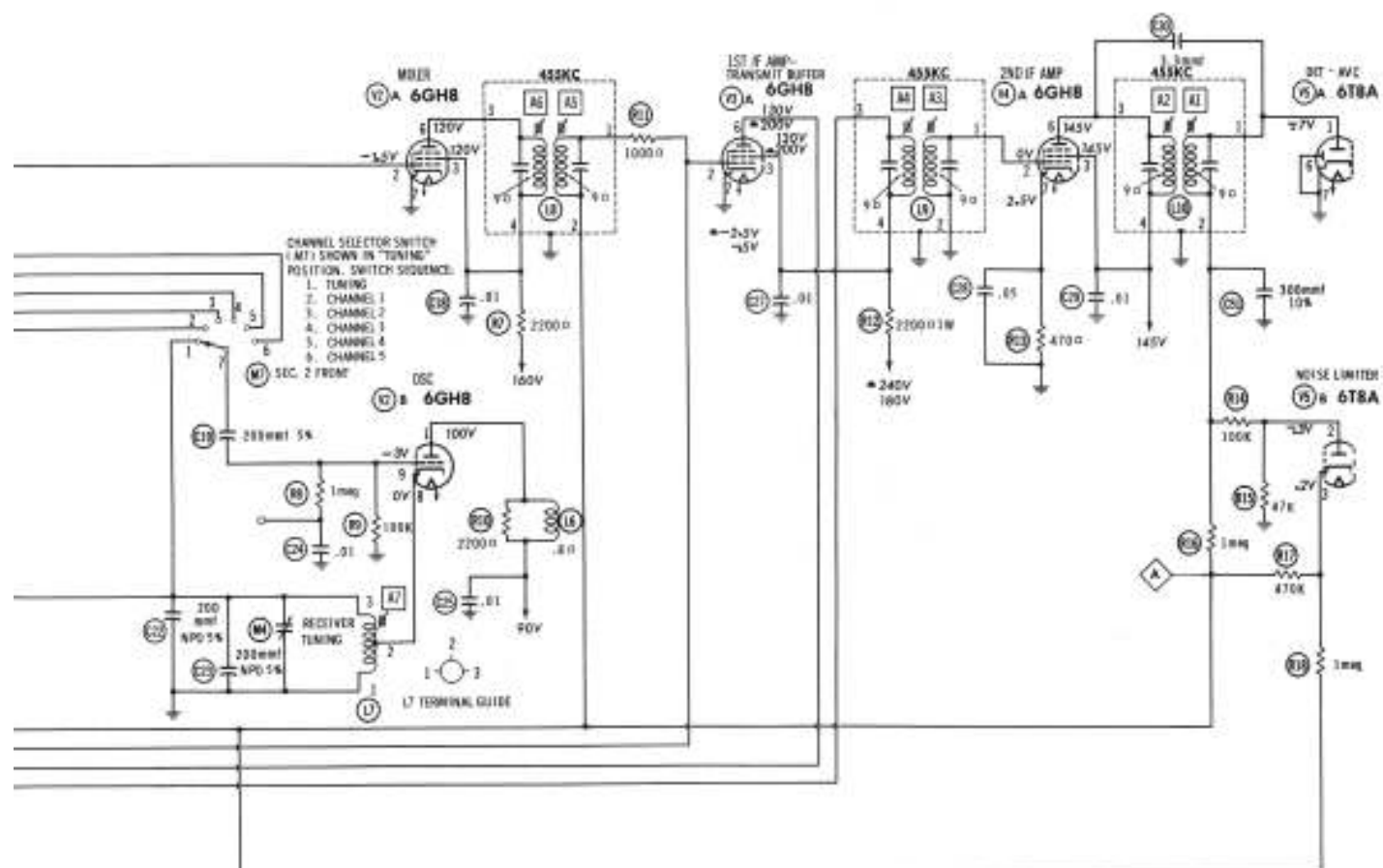
ALL READINGS MADE IN "RECEIVE" POSITION UNLESS OTHERWISE DESIGNATED.

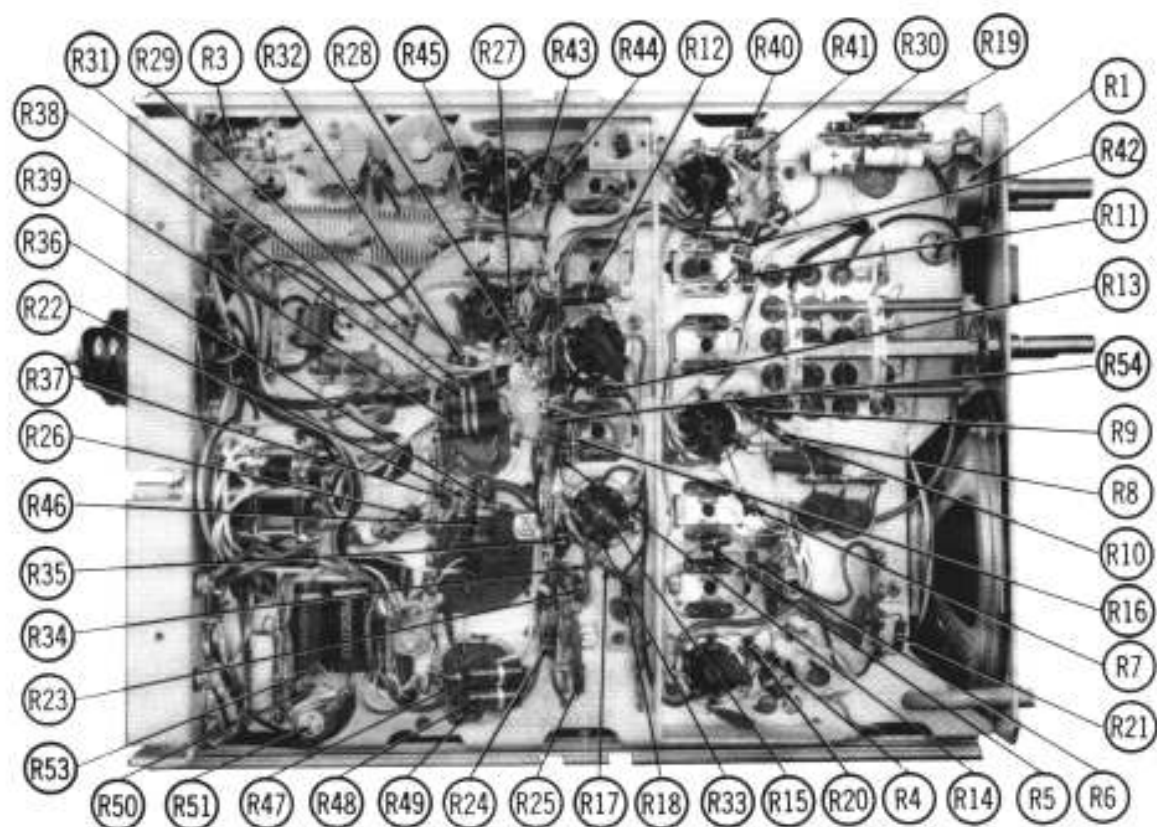
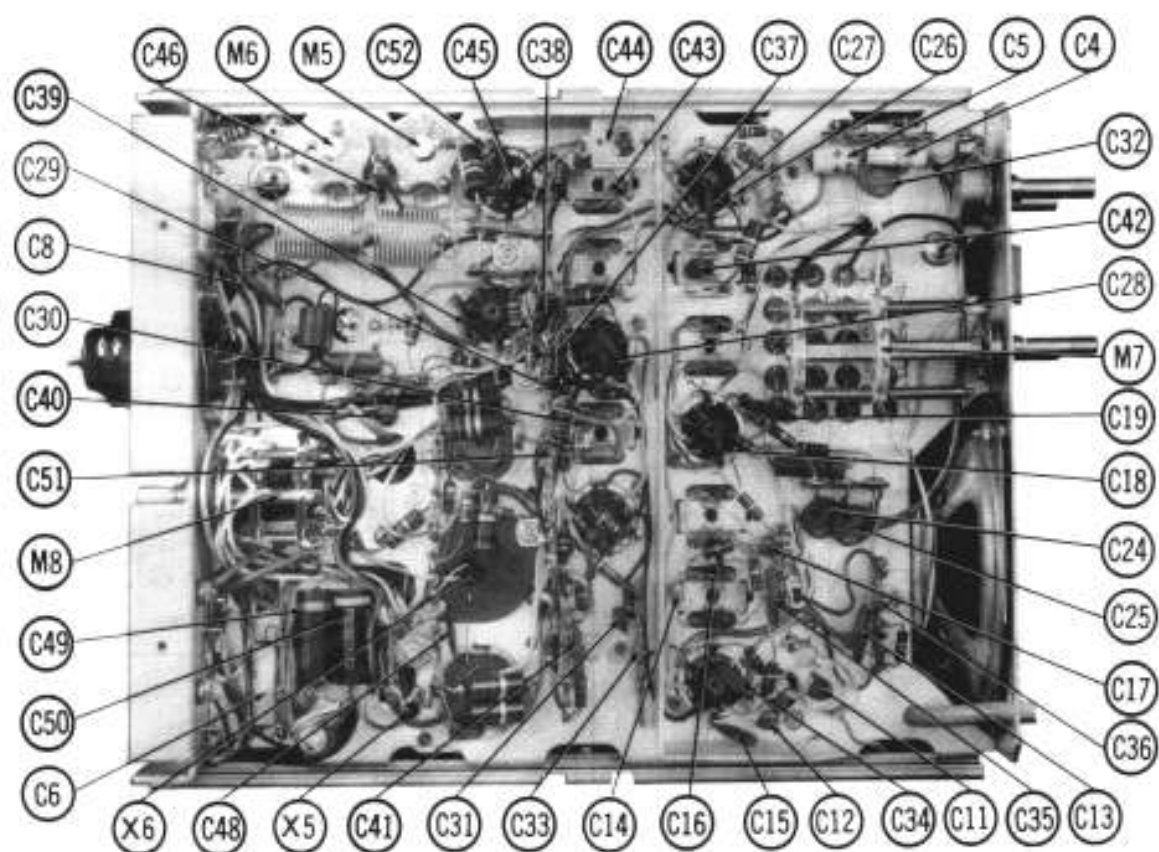
1. MEASURED FROM OUTPUT OF X6.

2. MEASURED AT FINAL AMP PLATE CURRENT TEST RECEPTACLE.

3. TAKEN IN "TRANSMIT" POSITION.

NC: NO CONNECTION





PARTS LIST AND DESCRIPTION (CONTINUED)

RESISTORS

All wattages 1/2 watt, or less, unless otherwise listed.

ITEM No.	RATING	REPLACEMENT DATA		ITEM No.	RATING	REPLACEMENT DATA		REMARKS
		WORMMAN PART No.	IBC PART No.			WORMMAN PART No.	IBC PART No.	
83	47K			839	47K			
84	250K			840	820			
85	220K			841	3100 1W			
86	10K			842	1800			
87	220K			843	100K			
88	10K			844	4.7M			
89	100K			845	100K			
90	220K			846	47K			
91	100K			847	3000			
92	220K 1W			848	27K 2W			
93	470K			849	27K 2W			
94	100K			850	47K			
95	47K			851	47K 1W			
96	100K			852	200K			
97	100K			853	200K			
98	100K			854	200K			
99	100K			855	200K			
100	100K			856	200K			
101	100K			857	200K			
102	100K			858	200K			
103	100K			859	200K			
104	100K			860	200K			
105	100K			861	200K			
106	100K			862	200K			
107	100K			863	200K			
108	100K			864	200K			
109	100K			865	200K			
110	100K			866	200K			
111	100K			867	200K			
112	100K			868	200K			
113	100K			869	200K			
114	100K			870	200K			
115	100K			871	200K			
116	100K			872	200K			
117	100K			873	200K			
118	100K			874	200K			
119	100K			875	200K			
120	100K			876	200K			
121	100K			877	200K			
122	100K			878	200K			
123	100K			879	200K			
124	100K			880	200K			
125	100K			881	200K			
126	100K			882	200K			
127	100K			883	200K			
128	100K			884	200K			
129	100K			885	200K			
130	100K			886	200K			
131	100K			887	200K			
132	100K			888	200K			
133	100K			889	200K			
134	100K			890	200K			
135	100K			891	200K			
136	100K			892	200K			
137	100K			893	200K			
138	100K			894	200K			
139	100K			895	200K			
140	100K			896	200K			
141	100K			897	200K			
142	100K			898	200K			
143	100K			899	200K			
144	100K			900	200K			
145	100K			901	200K			
146	100K			902	200K			
147	100K			903	200K			
148	100K			904	200K			
149	100K			905	200K			
150	100K			906	200K			
151	100K			907	200K			
152	100K			908	200K			
153	100K			909	200K			
154	100K			910	200K			
155	100K			911	200K			
156	100K			912	200K			
157	100K			913	200K			
158	100K			914	200K			
159	100K			915	200K			
160	100K			916	200K			
161	100K			917	200K			
162	100K			918	200K			
163	100K			919	200K			
164	100K			920	200K			
165	100K			921	200K			
166	100K			922	200K			
167	100K			923	200K			
168	100K			924	200K			
169	100K			925	200K			
170	100K			926	200K			
171	100K			927	200K			
172	100K			928	200K			
173	100K			929	200K			
174	100K			930	200K			
175	100K			931	200K			
176	100K			932	200K			
177	100K			933	200K			
178	100K			934	200K			
179	100K			935	200K			
180	100K			936	200K			
181	100K			937	200K			
182	100K			938	200K			
183	100K			939	200K			
184	100K			940	200K			
185	100K			941	200K			
186	100K			942	200K			
187	100K			943	200K			
188	100K			944	200K			
189	100K			945	200K			
190	100K			946	200K			
191	100K			947	200K			
192	100K			948	200K			
193	100K			949	200K			
194	100K			950	200K			
195	100K			951	200K			
196	100K			952	200K			
197	100K			953	200K			
198	100K			954	200K			
199	100K			955	200K			
200	100K			956	200K			
201	100K			957	200K			
202	100K			958	200K			
203	100K			959	200K			
204	100K			960	200K			
205	100K			961	200K			
206	100K			962	200K			
207	100K			963	200K			
208	100K			964	200K			
209	100K			965	200K			
210	100K			966	200K			
211	100K			967	200K			
212	100K			968	200K			
213	100K			969	200K			
214	100K			970	200K			
215	100K			971	200K			
216	100K			972	200K			
217	100K			973	200K			
218	100K			974	200K			
219	100K			975	200K			
220	100K			976	200K			
221	100K			977	200K			
222	100K			978	200K			
223	100K			979	200K			
224	100K			980	200K			
225	100K			981	200K			
226	100K			982	200K			
227	100K			983	200K			
228	100K			984	200K			
229	100K			985	200K			
230	100K			986	200K			
231	100K			987	200K			
232	100K			988	200K			
233	100K			989	200K			
234	100K			990	200K			
235	100K			991	200K			
236	100K			992	200K			
237	100K			993	200K			
238	100K			994	200K			
239	100K			995	200K			
240	100K			996	200K			
241	100K			997	200K			
242	100K			998	200K			
243	100K			999	200K			
244	100K			1000	200K			
245	100K			1001	200K			
246	100K			1002	200K			
247	100K			1003	200K			
248	100K			1004	200K			
249	100K			1005	200K			
250	100K			1006	200K			
251	100K			1007	200K			
252	100K			1008	200K			
253	100K			1009	200K			
254	100K			1010	200K			
255	100K			1011	200K			
256	100K			1012	200K			
257	100K			1013	200K			
258	100K			1014	200K			
259	100K			1015	200K			
260	100K			1016	200K			
261	100K			1017	200K			
262	100K			1018	200K			
263	100K			1019	200K			
264	100K			1020	200K			
265	100K			1021	200K			
266	100K			1022	200K			
267	100K			1023	200K			
268	100K			1024	200K			
269	100K			1025	200K			
270	100K			1026	200K			
271	100K			1027	200K			
272	100K			1028	200K			
273	100K			1029	200K			
274	100K			1030	200K			
275	100K			1031	200K			
276	100K			1032	200K			
277	100K			1033	200K			
278	100K			1034	200K			
279	100K			1035	200K			
280	100K			1036	200K			
281	100K			1037	200K			
282								