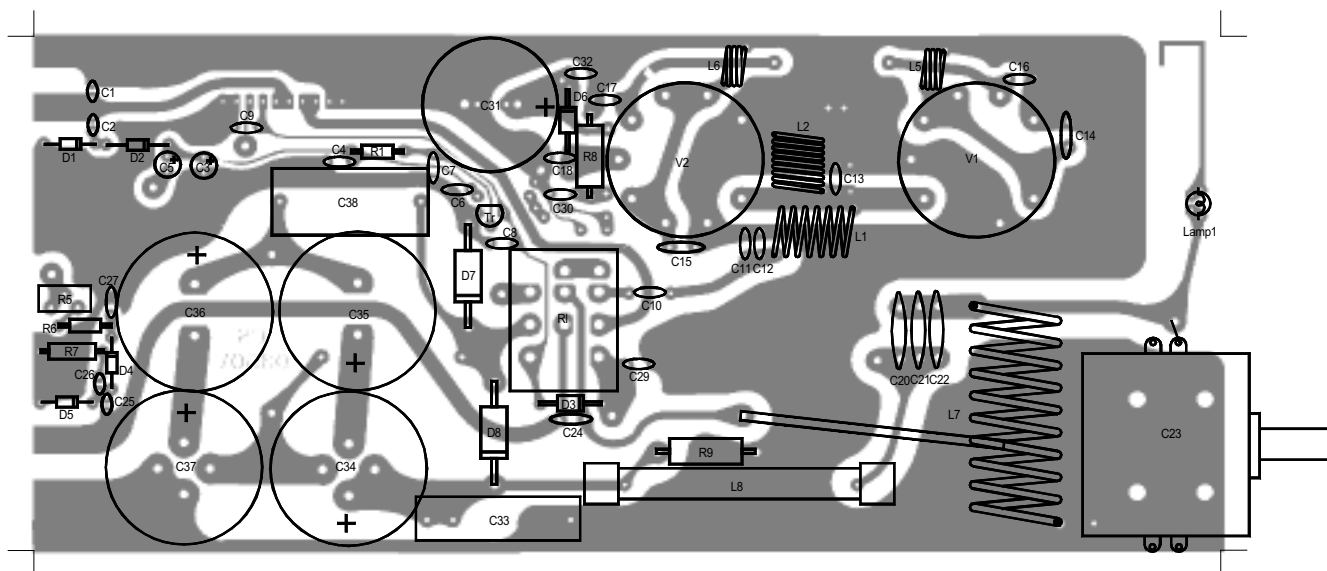
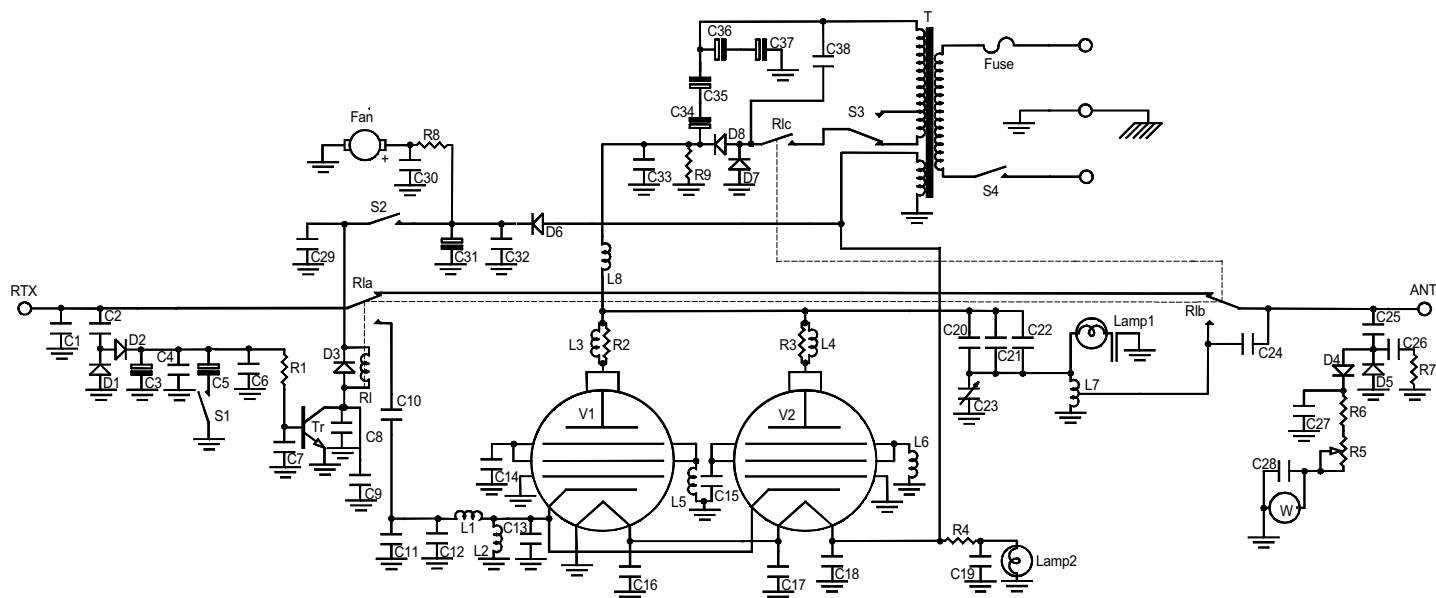


Mod. 350 linear amplifier

Schematic diagram

Version 1.00



List of components

C ₁	= 33 pF	50 V	N750	D ₃ = D ₆ = 1N4004
C ₂	= 8,2 pF	50 V	N750	D ₇ = D ₈ = BY 255
C ₃	= 10 µF	25 V		Tr = BC 547
C ₄	= 10 nF	50 V		V ₁ = V ₂ = EL 509 - EL 519
C ₅	= 47 µF	25 V		L ₁ = 6 turns ϕ 8 mm wire ϕ 0.8 mm
C ₆	= 10 nF	50 V		L ₂ = 9 turns ϕ 8 mm wire ϕ 0.8 mm
C ₇	= 10 nF	50 V		L ₃ = L ₄ = 3 turns wound on resistor, wire ϕ 0.8 mm
C ₈	= 10 nF	50 V		L ₅ = L ₆ = 3 turns ϕ 6 mm wire ϕ 0.8 mm
C ₉	= 100 nF	50 V		L ₇ = 9 turns ϕ 13 mm wire ϕ 1.5 mm tap 4 ^a turns
C ₁₀	= 10 nF	50 V		L ₈ = RF impedance block
C ₁₁	= 120 pF	50 V	N750	R ₁ = Relè 12 V 5513
C ₁₂	= 120 pF	50 V	N750	Fuse = 3 A
C ₁₃	= 100 pF	50 V	N750	Lamp ₁ = 24 V
C ₁₄	= 220 pF	500 V	N750	Lamp ₂ = Meter lamp
C ₁₅	= 220 pF	500 V	N750	S ₁ = Switch 3A (AM - SSB)
C ₁₆	= 100 nF	50 V		S ₂ = Switch 3A (ON - St. By)
C ₁₇	= 100 nF	50 V		S ₃ = Switch 3A (HI - LOW)
C ₁₈	= 100 nF	50 V		S ₄ = Switch 3A (ON - OFF)
C ₁₉	= 100 nF	50 V		T = Transformator IN 220 OUT 0-250-300V 0-12 V
C ₂₀	= 4,7 nF	1000 V		Fan = Fan 12 V
C ₂₁	= 4,7 nF	1000 V		
C ₂₂	= 4,7 nF	1000 V		
C ₂₃	= Variable condensator	50 pF		
C ₂₄	= 100 pF	500 V	N750	
C ₂₅	= 2,2 pF	50 V	N750	
C ₂₆	= 33 pF	50 V	N750	
C ₂₇	= 100 nF	50 V		
C ₂₈	= 100 nF	50 V		
C ₂₉	= 100 nF	50 V		
C ₃₀	= 10 nF	50 V		
C ₃₁	= 470 µF	35 V		
C ₃₂	= 100 nF	50 V		
C ₃₃	= 18 nF	1000V		
C ₃₄	= 470 µF	200 V		
C ₃₅	= 470 µF	200 V		
C ₃₆	= 470 µF	200 V		
C ₃₇	= 470 µF	200 V		
C ₃₈	= 470 nF	630V~		
R ₁	= 2,2 K Ω	¼W		
R ₂	= 47 Ω	2W		
R ₃	= 47 Ω	2W		
R ₄	= 68 Ω	2W		
R ₅	= Trimmer	220 K Ω		
R ₆	= 47 K Ω	¼W		
R ₇	= 27 Ω	½W		
R ₈	= 47 Ω	1W		
R ₉	= 470 K Ω	2W		
D ₁ = D ₂ = D ₄ = D ₅	= 1N4148			