



RM

Costruzioni Elettroniche

di Marchioni Davide & Daniele s.n.c.

Via IV Novembre 215/5

Casella postale N° 33

40045 Ponte della Venturina (BO) ITALY

Tel +39 0534 60460

Fax +39 0534 60463

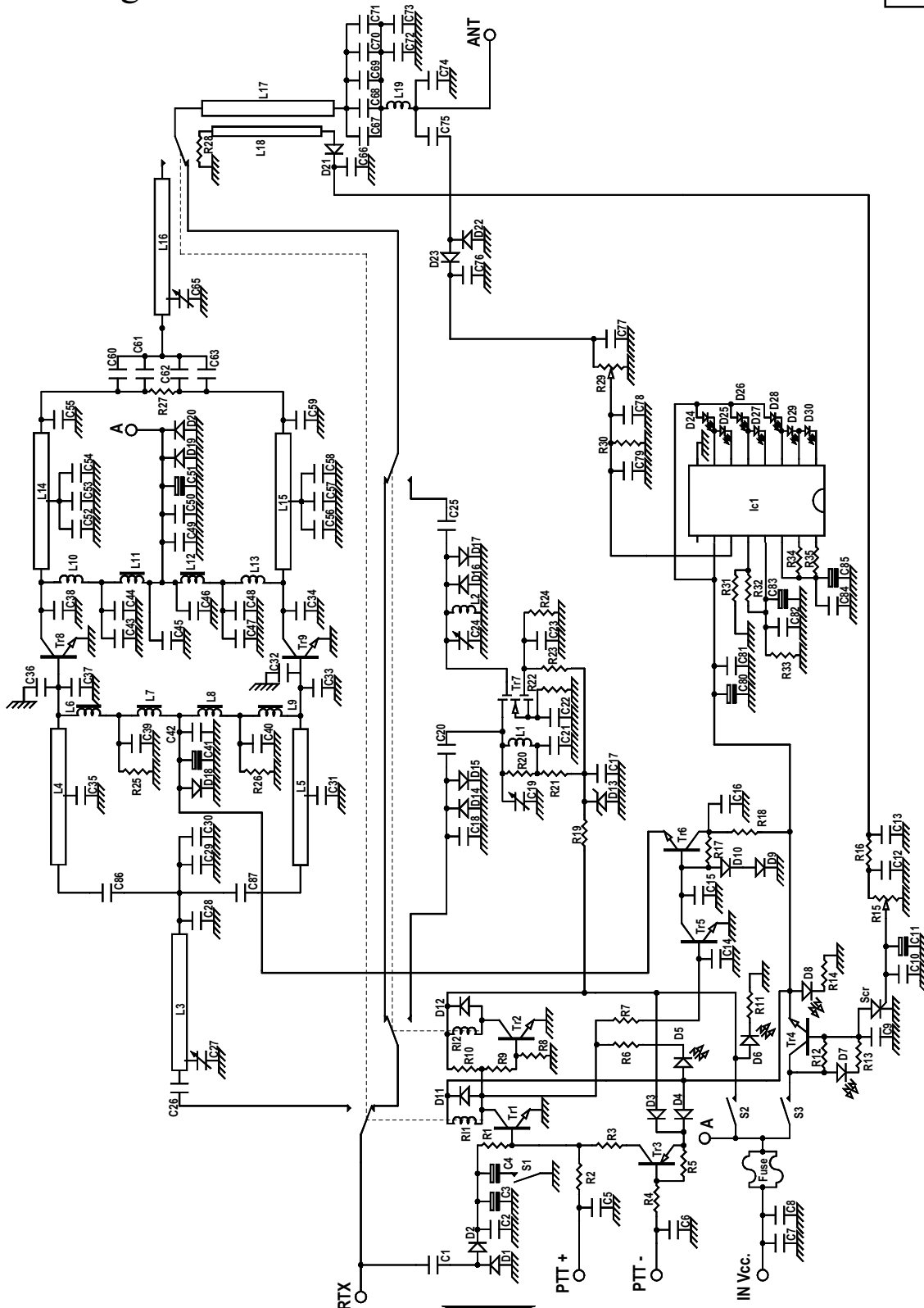
E-MAIL ufftec@rmitaly.com

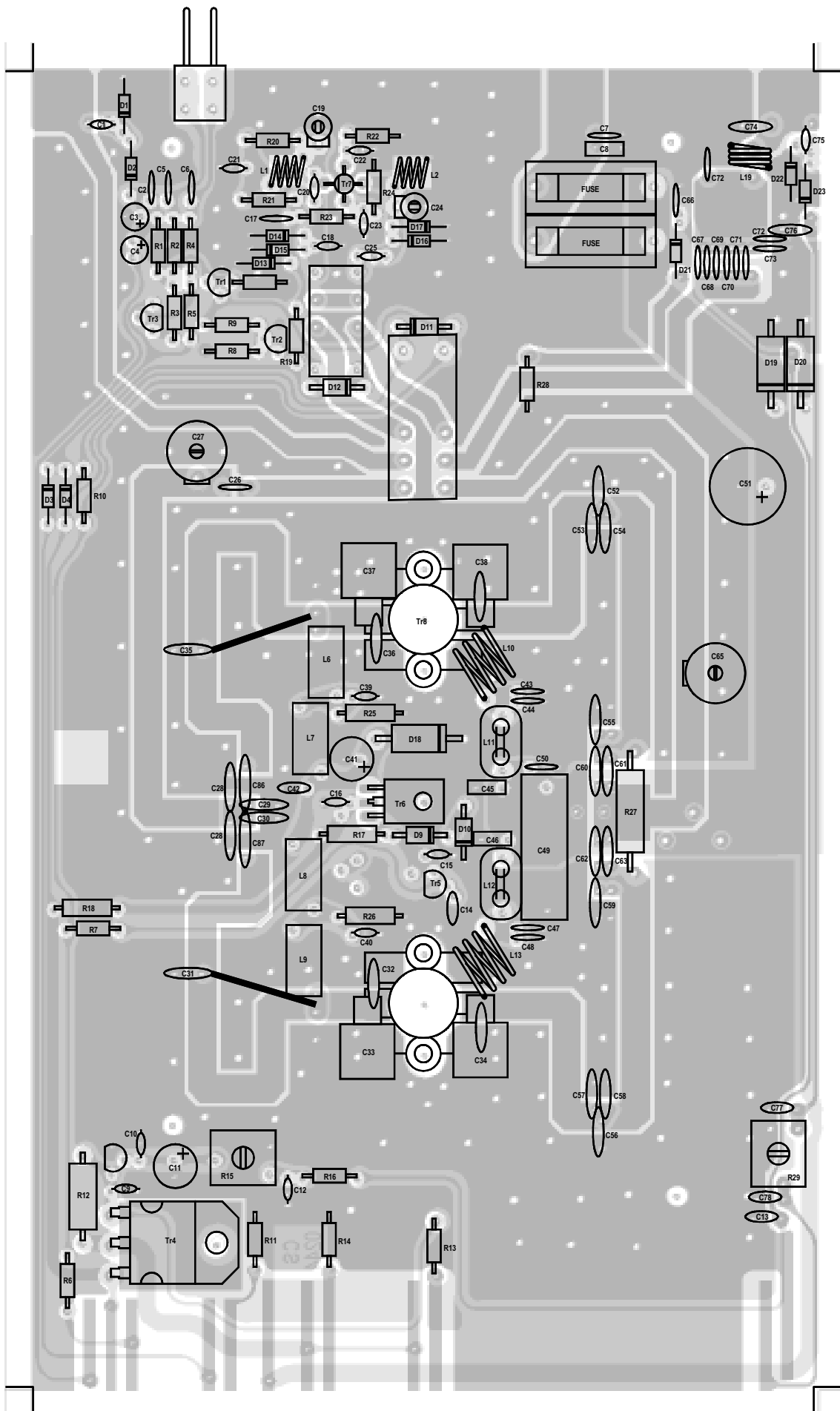
<http://www.rmitaly.com>

Mod. VLA 200-1 VHF linear amplifier

Schematic diagram

Version 1.01





List of components

C ₁	= 2,2 pF	NP0	50 V		C ₄₉	= 33 nF	1000 V	Polyester
C ₂	= 1,0 nF		50 V		C ₅₀	= 100 nF	50 V	
C ₃	= 4,7 µF		16 V		C ₅₁	= 470 µF	25 V	
C ₄	= 33 µF		16 V		C ₅₂	= 33 pF	NP0	500 V
C ₅	= 1,0 nF		50 V		C ₅₃	= 33 pF	NP0	500 V
C ₆	= 1,0 nF		50 V		C ₅₄	= 33 pF	NP0	500 V
C ₇	= 10 nF		50 V		C ₅₅	= 8,2 pF	NP0	500 V
C ₈	= 220 nF		63 V	Multilayer	C ₅₆	= 33 pF	NP0	500 V
C ₉	= 1,0 nF		50 V		C ₅₇	= 33 pF	NP0	500 V
C ₁₀	= 1,0 nF		50 V		C ₅₈	= 33 pF	NP0	500 V
C ₁₁	= 10 µF		16 V		C ₅₉	= 8,2 pF	NP0	500 V
C ₁₂	= 1,0 nF		50 V		C ₆₀	= 1,0 nF	500 V	
C ₁₃	= 1,0 nF		50 V		C ₆₁	= 1,0 nF	500 V	
C ₁₄	= 1,0 nF		50 V		C ₆₂	= 1,0 nF	500 V	
C ₁₅	= 1,0 nF		50 V		C ₆₃	= 1,0 nF	500 V	
C ₁₆	= 1,0 nF		50 V		C ₆₄	= not present		
C ₁₇	= 1,0 nF		50 V		C ₆₅	= Trimmer 10 - 80 pF		
C ₁₈	= 4,7 pF	NP0	50 V		C ₆₆	= 1,0 nF	50 V	
C ₁₉	= Trimmer 3 - 10 pF				C ₆₇	= 180 pF	N750	500V
C ₂₀	= 4,7 pF	NP0	50 V		C ₆₈	= 180 pF	N750	500V
C ₂₁	= 1,0 nF		50 V		C ₆₉	= 180 pF	N750	500V
C ₂₂	= 1,0 nF		50 V		C ₇₀	= 180 pF	N750	500V
C ₂₃	= 1,0 nF		50 V		C ₇₁	= 180 pF	N750	500V
C ₂₄	= Trimmer 3 - 10 pF				C ₇₂	= 2x12 pF	NP0	500 V
C ₂₅	= 3,9 pF	NP0	50 V		C ₇₃	= 12 pF	NP0	500 V
C ₂₆	= 470 pF	N750	50 V		C ₇₄	= 33 pF	NP0	500 V
C ₂₇	= Trimmer 10 - 80 pF				C ₇₅	= 2,2 pF	NP0	50 V
C ₂₈	= 33 +22 pF	NP0	500 V		C ₇₆	= 1,0 nF	50 V	
C ₂₉	= 18 pF	NP0	500 V		C ₇₇	= 1,0 nF	50 V	
C ₃₀	= 18 pF	NP0	500 V		C ₇₈	= 1,0 nF	50 V	
C ₃₁	= 22 pF	NP0	500 V		C ₇₉	= 10 nF	50 V	
C ₃₂	= 22 pF	N750	500 V		C ₈₀	= 10 µF	16 V	
C ₃₃	= 270 pF		500 V	Mica	C ₈₁	= 10 nF	50 V	
C ₃₄	= 390 pF	500 V	Mica + 56 pF	500 V NP0	C ₈₂	= 10 nF	50 V	
C ₃₅	= 22 pF	NP0	500 V		C ₈₃	= 4,7 µF	16 V	
C ₃₆	= 22 pF	N750	500 V		C ₈₄	= 10 nF	50 V	
C ₃₇	= 270 pF		500 V	Mica	C ₈₅	= 10 µF	16 V	
C ₃₈	= 390 pF	500 V	Mica + 56 pF	500 V NP0	C ₈₆	= 470 pF	N750	50 V
C ₃₉	= 1,0 nF		50 V		C ₈₇	= 470 pF	N750	50 V
C ₄₀	= 1,0 nF		50 V		R ₁	= 2,2 KΩ	¼ W	
C ₄₁	= 47 µF		16 V		R ₂	= 2,2 KΩ	¼ W	
C ₄₂	= 1,0 nF		50 V		R ₃	= 2,2 KΩ	¼ W	
C ₄₃	= 2,2 nF		500 V		R ₄	= 12 KΩ	¼ W	
C ₄₄	= 1,0 nF		500 V		R ₅	= 2,2 KΩ	¼ W	
C ₄₅	= 220 nF		63 V	Multilayer	R ₆	= 1,0 KΩ	¼ W	
C ₄₆	= 220 nF		63 V	Multilayer	R ₇	= 12 KΩ	¼ W	
C ₄₇	= 1,0 nF		500 V		R ₈	= 12 KΩ	¼ W	
C ₄₈	= 2,2 nF		500 V		R ₉	= 12 KΩ	¼ W	

R ₁₀ = 4,7 K Ω ¼ W	L ₂ = 4 turns ϕ 5 mm wire ϕ 0,8 mm
R ₁₁ = 1,0 K Ω ¼ W	L ₃ = Strip line
R ₁₂ = 330 Ω 2 W	L ₄ = Strip line
R ₁₃ = 1,0 K Ω ¼ W	L ₅ = Strip line
R ₁₄ = 1,0 K Ω ¼ W	L ₆ = VK 200
R ₁₅ = Trimmer 4,7 K Ω	L ₇ = VK 200
R ₁₆ = 2,2 K Ω ¼ W	L ₈ = VK 200
R ₁₇ = 1,2 K Ω ¼ W	L ₉ = VK 200
R ₁₈ = 1,0 Ω ½ W	L ₁₀ = 3 turns ϕ 8 mm wire ϕ 1,5 mm
R ₁₉ = 470 Ω ¼ W	L ₁₁ = 2 turns wire ϕ 1,5 mm on ½ balun
R ₂₀ = 1,0 K Ω ¼ W	L ₁₂ = 2 turns wire ϕ 1,5 mm on ½ balun
R ₂₁ = 150 Ω ¼ W	L ₁₃ = 3 turns ϕ 8 mm wire ϕ 1,5 mm
R ₂₂ = 220 Ω ¼ W	L ₁₄ = Strip line
R ₂₃ = 6,8 K Ω ¼ W	L ₁₅ = Strip line
R ₂₄ = 3,3 K Ω ¼ W	L ₁₆ = Strip line
R ₂₅ = 10 Ω ½ W	L ₁₇ = Strip line
R ₂₆ = 10 Ω ½ W	L ₁₈ = Strip line
R ₂₇ = 100 Ω 2 W	L ₁₉ = 3 turns ϕ 6 mm wire ϕ 1,2 mm
R ₂₈ = 100 Ω ¼ W	RI ₁ = 4052 - 12
R ₂₉ = Trimmer 220 K Ω	RI ₂ = 3022 - 12
R ₃₀ = 180 Ω ¼ W	Fuse = 2 x 12 A
R ₃₁ = 10 K Ω ¼ W	S ₁ = Switch 3A (FM - SSB)
R ₃₂ = 100 K Ω ¼ W	S ₂ = Switch 3A (Pre ON - OFF)
R ₃₃ = 22 K Ω ¼ W	S ₃ = Switch 3A (Lin ON - OFF)
R ₃₄ = 22 K Ω ¼ W	
R ₃₅ = 10 K Ω ¼ W	
D ₁ = D ₂ = D ₃ = D ₄ = 1N4148	
D ₅ = Led (red)	
D ₆ = Led (yellow)	
D ₇ = Led (red)	
D ₈ = Led (green)	
D ₉ = D ₁₀ = D ₁₁ = D ₁₂ = 1N4004	
D ₁₃ = Zener 5,1 V ½ W	
D ₁₄ = D ₁₅ = D ₁₆ = D ₁₇ = 1N4148	
D ₁₈ = D ₁₉ = D ₂₀ = 1N5400	
D ₂₁ = D ₂₂ = D ₂₃ = 1N4148	
D ₂₄ = D ₂₅ = D ₂₆ = D ₂₇ = Led (green)	
D ₂₈ = D ₂₉ = D ₃₀ = Led (green)	
Tr ₁ = BC 547	
Tr ₂ = BC 547	
Tr ₃ = BC 557	
Tr ₄ = TIP 142	
Tr ₅ = BC 547	
Tr ₆ = BD 175	
Tr ₇ = BF 966	
Tr ₈ = SD 1477	
Tr ₉ = SD 1477	
Scr = C 102	
Ic ₁ = KA 2288	
L ₁ = 4 turns ϕ 5 mm wire ϕ 0,8 mm	