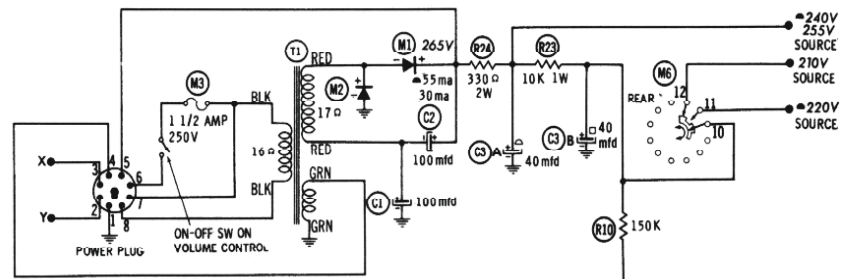


NUMBERS ASSIGNED TO COILS, SWITCHES, PLUGS, SOCKETS, AND TRANSFORMERS ARE TO FACILITATE CIRCUIT TRACING OR COMPONENT REPLACEMENT AND MAY NOT NECESSARILY BE FOUND ON THE UNIT.



- DC voltage measurements taken with vacuum tube voltmeter; AC voltages measured with 1000 ohm per volt voltmeter.
- Socket connections are shown as bottom views.
- Measured values are from socket pin to common ground.
- Line voltage maintained at 117 volts for voltage readings.
- Nominal tolerance of component values makes possible a variation of ±1% in voltage and resistance readings.
- All controls at minimum, proper output load connected.

SEE PARTS LIST FOR ALTERNATE VALUE OR APPLICATION
 DC COIL RESISTANCE VALUES UNDER ONE OHM NOT SHOWN ON SCHEMATIC DIAGRAM
 ARROWS ON CONTROLS INDICATE CLOCKWISE ROTATION (CONTROL VIEWED FROM SHAFT END)

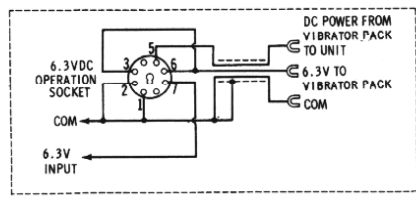
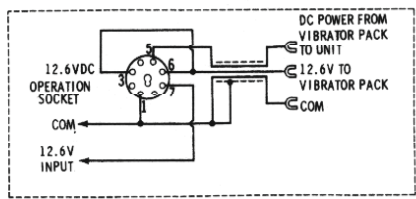
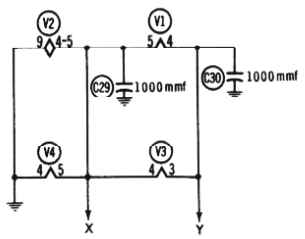
SELECTOR SW (M6) SHOWN IN "RECEIVE" POSITION
 SW SEQUENCE
 1. TRANSMIT (CW)
 2. RECEIVE
 3. TRANSMIT
 SPRING RETURN

117VAC POWER INPUT SOCKET
 28 WATTS (RECEIVE)
 32 WATTS (TRANSMIT)

RESISTANCE READINGS

ITEM	TUBE	Pin 1	Pin 2	Pin 3	Pin 4	Pin 5	Pin 6	Pin 7	Pin 8	Pin 9
V1	6AN8	†800K	†11meg	3.5Ω	FILS	FILS	†15K	†230K	.1Ω	470Ω
V2	ECC83/12AX7	†480K	10meg	0Ω	FILS	FILS	†220K	270K	3300Ω	
V3	6AQ5A	270K	470Ω	FILS	FILS	†760Ω	†330Ω	270K		
V4	6A8A	.0Ω	47K	†22K	FILS	FILS	.0Ω	22K	†22K	†710Ω

ALL MEASUREMENTS TAKEN IN "RECEIVE" POSITION UNLESS OTHERWISE INDICATED
 † MEASURED FROM OUTPUT OF M1
 ▲ MEASURED IN "TRANSMIT" POSITION



HEATH MODELS
 CB-1, W-CB-1